

The background of the slide features a collage of industrial equipment. On the left, there are red magnetic clamping tools with the 'BUX' logo. In the center, a large, curved metal component, possibly a part of a conveyor or a large machine, is shown. The overall scene is brightly lit, suggesting a factory or industrial setting.

Walker Magnetics Europe BV

Company Presentation

**“The most comprehensive package
of industrial product clamping tools
and auxiliaries”**



The background of the slide features a close-up of industrial machinery. A large, curved metal component is visible, with several red clamping devices attached. Each device has a silver padlock and the 'BUX' logo. The scene is lit with dramatic, high-contrast lighting, creating a sense of precision and industrial strength.

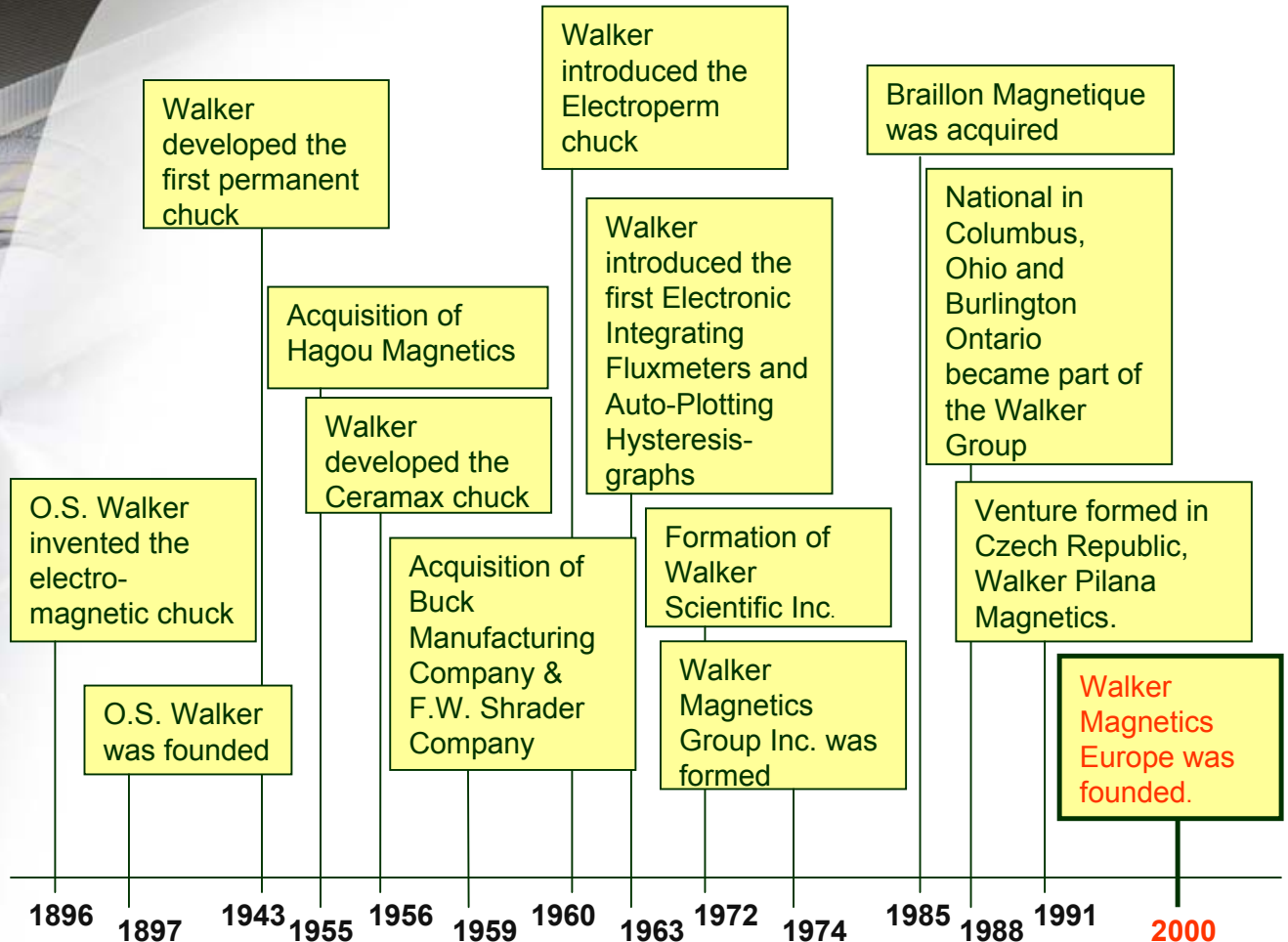
Mission statement

Walker Magnetics Europe

Create business potential for our customers in product clamping, based on a high quality image, high market awareness and through market driven innovation

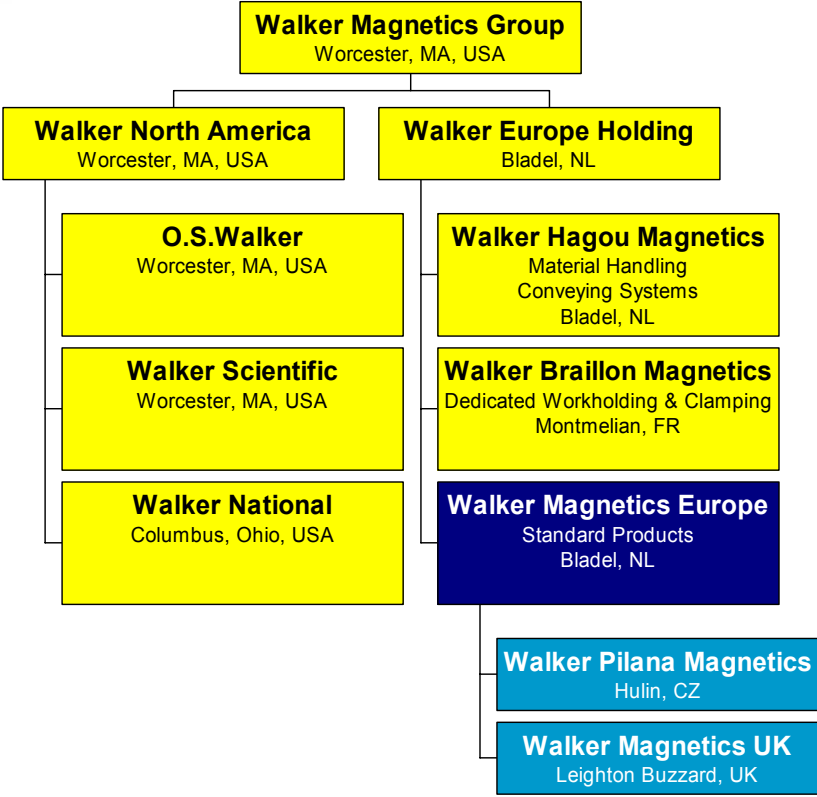
Walker Magnetics

over 100 years of magnetic experience



Company Structure

Walker Magnetics Group



Core business

Walker Magnetics Europe

Manufacturing, marketing, sales and after sales service of industrial product clamping tools and auxiliaries for:

- Workholding + Clamping applications
- Lifting + Handling applications
- Boring + Drilling applications



Workholding & Clamping

Product range

Widest range of Permanent, Electro- and Electro-permanent chucks and accessories for

- Surface grinding
- Circular grinding
- Turning
- Milling and planing
- Electrical Discharge Machining





Workholding & Clamping

Developments in Permanent Chucks

- New **NEOMICRO** permanent magnetic chuck for grinding of very small and thin components
- New **NEOMILL** permanent magnetic chuck for milling of medium size components
- New **NEOMAX** permanent chuck magnetic for milling of large components
- **EROG RIP** permanent magnetic pallet for EDM and HS Milling of medium size components

Lifting & Handling

Product range

Lift Magnets and accessories for flat and round material:

- Permanent
- Electro-Permanent
- Electro (Battery)





Lifting & Handling Developments

- **NEO 125** and (new) **NEO 2000**
Neodymium permanent lift magnets
- New range of **BM** and **BMP** battery
lift magnets
- Upgrade of **EPH** electro-permanent
lift magnets



Boring & Drilling

Product range

**BUX Drill stands and accessories
for drilling and cutting “on the spot”**

- **Electro-magnetic drill stands**
- **Rotobux hole boring machines**

Boring & Drilling Developments

- Steel case for Rotobux machines and accessories
- New Rotobux BR-60E with Eibenstock drill motor



After Sales Service

All applications

- **Repair:**

- Warranty WME products
- Non-warranty WME products
- Non-WME products

Availability of loan products to limit process disturbance at customer while product is being repaired.

- **Spare parts:**

- For all WME products, including obsolete types
- Critical items available from stock

- **Field service:**

Service assistance if and wherever required