

# POWERFIX®

Your all in one tool

This powerful, multi adjustable, magnetic workholding fixture is designed for the rapid and effective clamping of different sized and shaped steel components for performing a variety of hand working operations. Pole adapters for square and hexagonal bar stock, as well as small diameters are available on request.



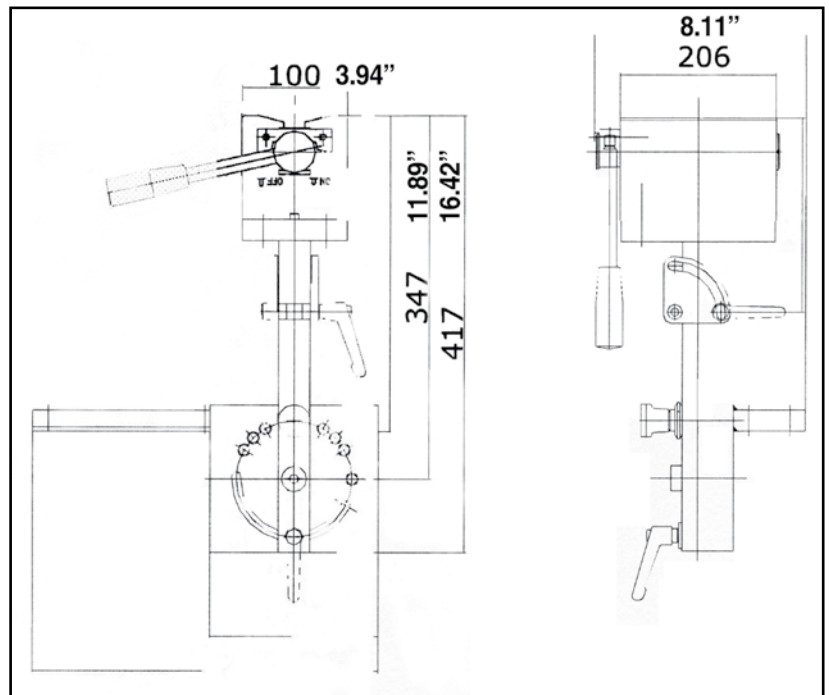
## FEATURES:

- Effortless deburring, grinding, milling, welding, sawing and drilling
- Dramatically improves productivity
- 5 sided access of workpiece
- Suitable for plates, blocks, pipes, solid rounds, tubes and angles
- Workpiece capacity 330 lbs.
- Workholding without damage
- Optional adapter piece for different shapes

# POWERFIX®

Your all in one tool

SPECIFICATIONS	
<b>MODEL</b>	<b>POWERFIX 150</b>
Holding force, max.* (lbs.)	1800
Sliding force, max.* (lbs.)	450 lbs.
Min. workpiece thickness (in.)	.16
Min./max. diameter (in.)	2.36 / 7.9
L x W x H overall (in.)	13 x 8.12 x 16.47
L x W magnetic face (in.)	6 x 4
L x W mounting bracket (in.)	13 x 2.76
Angle setting, right (degrees)	30, 45, 60 and 90
Angle setting, left (degrees)	30, 45 and 60
Swiveling radius (in.)	approx. 13.67
Tilting forward	Continuous to 90°
Tilting radius (in.)	approx. 7.37
Weight (lbs.)	approx. 44
*Based on mild steel, at least 1.38 in. thick, smooth and flat	



**WALKER  
MAGNETICS**

*Magnetic Solutions Since 1896*

Worcester, MA

(508) 853-3232

FAX (508) 852-8649

1-800-W-MAGNET

email: [sales@walkermagnet.com](mailto:sales@walkermagnet.com)

[www.walkermagnet.com](http://www.walkermagnet.com)