

# BUX PowerFix®

**Stuck on steel**  
**Permanent magnetic**  
**work holding fixture**



## Features and benefits at one glance:

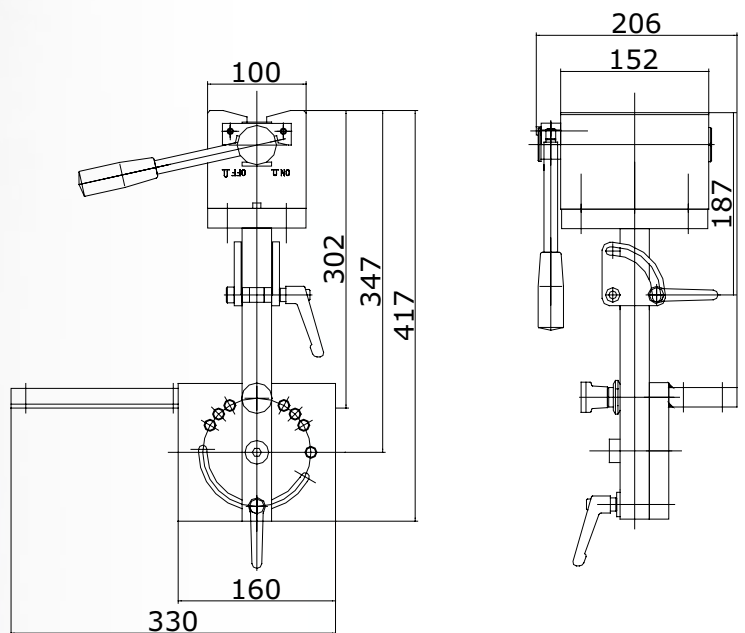
- effortless deburring, grinding, milling, welding, sawing and drilling
- dramatically improves your productivity
- instant working with a single set-up
- access to 5 sides of the work piece
- suitable for plates, blocks, pipes and solid rounds
- capacity up to 150 kg work piece weight
- quick adjustment in two planes
- work holding without deformation or damage
- optional adapter pieces for different shapes

**WALKER**  
**WALKER**  
**MAGNETICS**

# BUX PowerFix®

## Stuck on steel

This powerful, multi adjustable, magnetic workholding fixture, is designed for the rapid and effective clamping of different sized and shaped steel components for performing a variety of hand working operations. Pole adapters for square and hexagonal bar stock, as well as small diameters are available on request. Supplied with user instruction manual.



### Technical specifications

| Model                          | PowerFix 150      |
|--------------------------------|-------------------|
| Holding force, max.* (N)       | 8000              |
| Sliding force, max.* (N)       | 2000              |
| Min. work piece thickness (mm) | 4                 |
| Min./max. diameter (mm)        | 60 / 200          |
| L x W x H overall (mm)         | 330 x 206 x 418   |
| L x W magnetic face (mm)       | 152 x 100         |
| L x W mounting bracket (mm)    | 330 x 70          |
| Angle setting, right (°)       | 30, 45, 60 and 90 |
| Angle setting, left (°)        | 30, 45 and 60     |
| Swiveling radius (mm)          | approx. 347       |
| Tilting forward                | Continuous to 90° |
| Tilting radius (mm)            | approx. 187       |
| Weight (kg)                    | approx. 20        |

\* Based on mild steel St37, at least 35 mm thick, smooth and flat. Alterations reserved.